

Bethesda Missions Haiti



The two stars represent Cabarete and Jacmel which identify the initial and primary ministry sites of the mission.



BETHESDA MISSION FACTS

- **1957** – Pastor Jovin responded to the leading of the Lord to begin community prayer meetings every night in different homes.
- **1965** – Pastor Jovin began full time biblical studies & led a small church in Cabaret.
- **1970** – Pastor Jovin and Emma were married and travelled to England to further their education (Seminary / nursing)

BETHESDA MISSION FACTS

- **1974** – Our family return to Haiti and founded the Oeuvre Evangelique Baptist de Bethesda
- **1986** – the mission was formally licensed by the Haitian government
- **1980's** OEBB Partnership with Emmanuel International



BETHESDA COMMUNITY IMPACT

Ministry – 9 church plants

Education – 7 elementary & 2 high schools

Healthcare – 3 clinics

Orphanage/boarding homes (1 girl / 1 boy)

Micro-loan program for women in churches

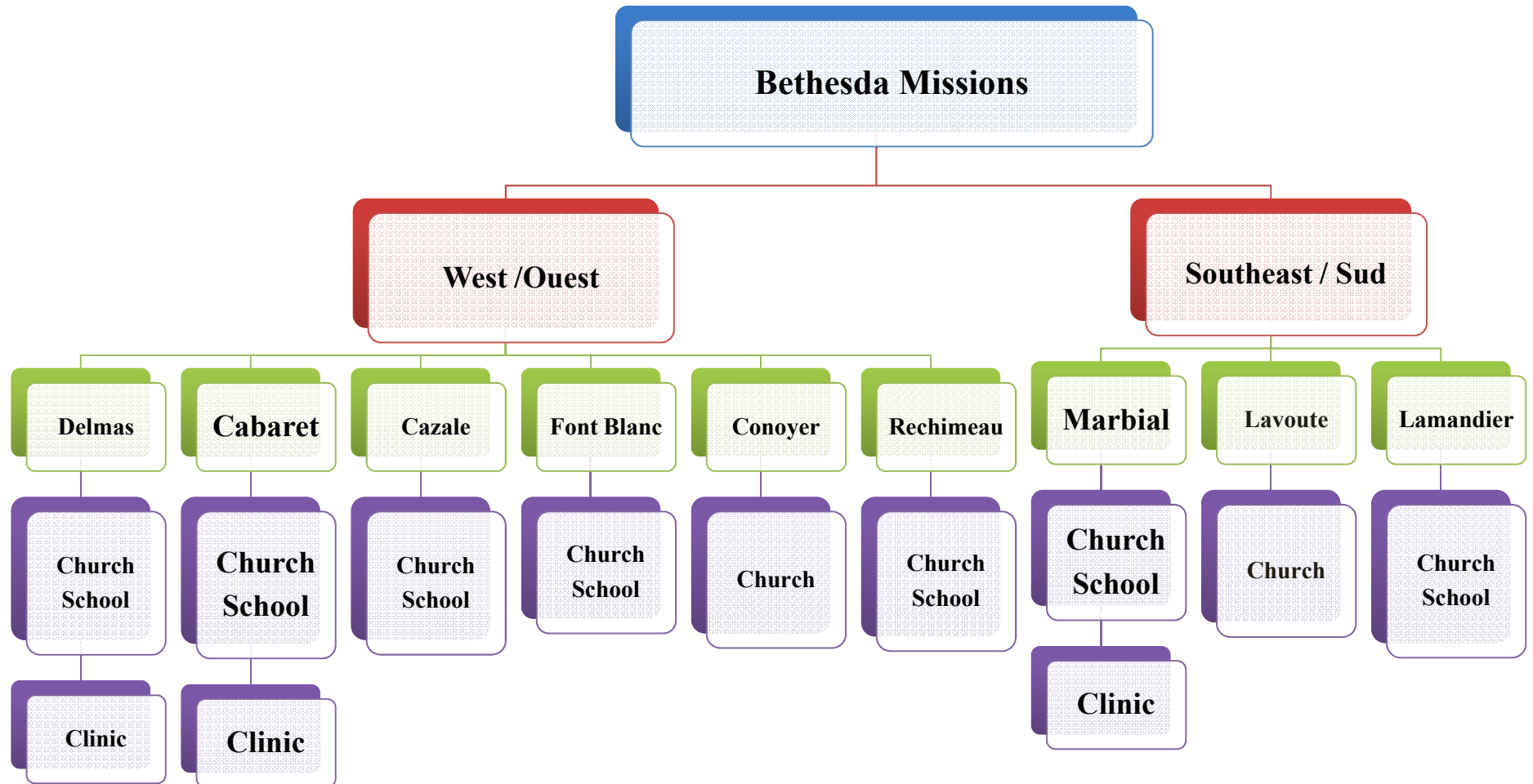
Livestock distribution women (chicken, goat, pigs)

Reforestation program

Sanitation program

Small business loan program

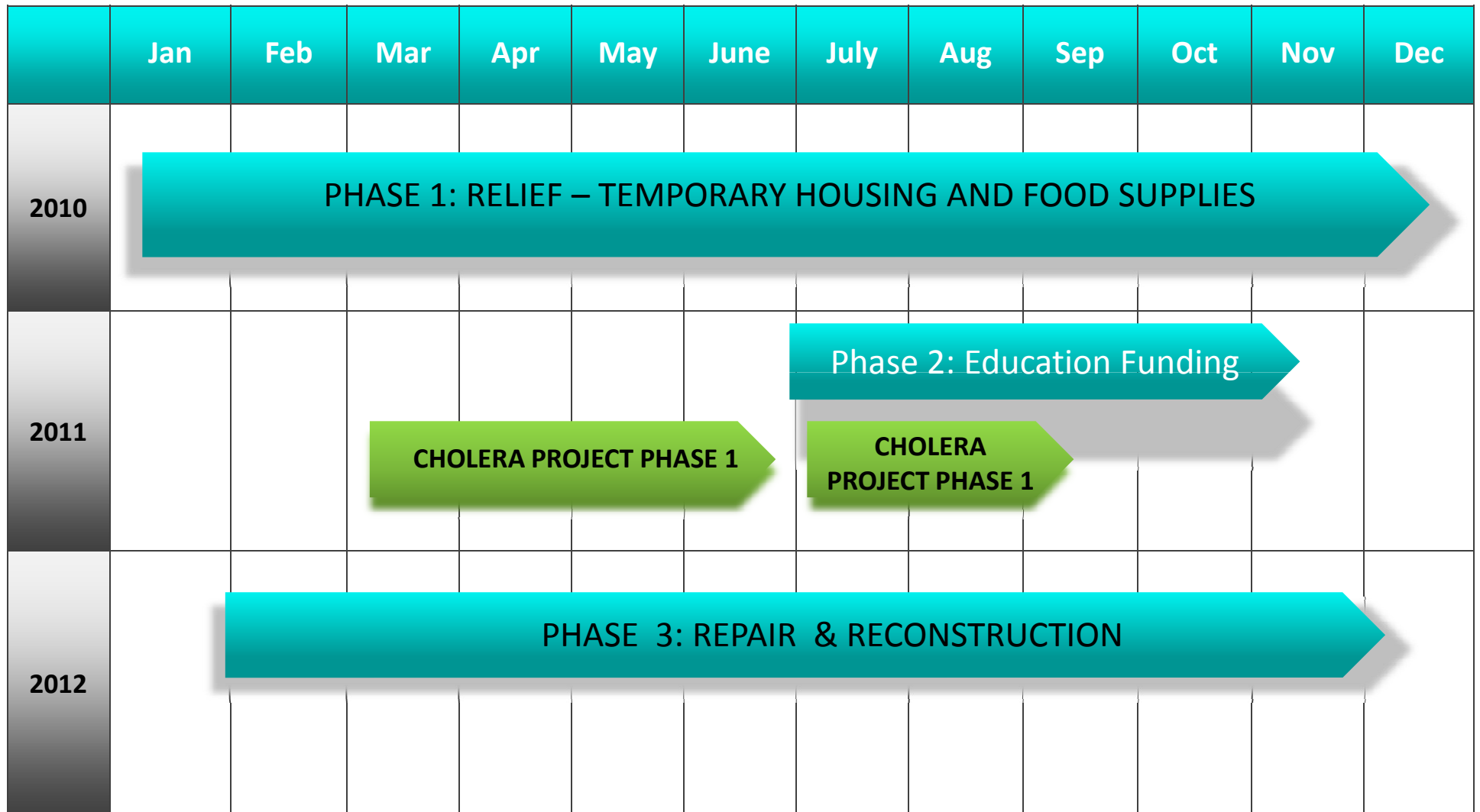
BETHESDA MISSION STRUCTURE



RECONSTRUCTION WORK TO DATE

1. Marbial: School (580 students - active)
Church (250 member - active)
2. Lavoute: Church Construction: (active)
3. Cabarete: Church (600 membership - active)
School (200-250 students - active)
4. Community Housing (pending)
5. Special thanks to Heath Evangelical Church who after the earthquake send \$15,000.00 for house repair and reconstruction. We rebuilt one family home and we helped 8 others families to repair their homes.

PROJECT CALENDAR: 3 YEARS



OEBB Mission Structure

West / Ouest

Southeast / Sud

Delmas

Cabaret

Cazale

Font Blanc

Conoyer

Rechimeau

Marbial

Lavoute

Lamandier

Church
School

**Church
School**

Church
School

Church
School

Church

Church
School

**Church
School**

Church

Church
School

Clinic

Clinic

Clinic



JACMEL: DAMAGED SCHOOL BUILDING



JACMEL: DEMOLITION



JACMEL: GROUND BREAKING



JACMEL: GROUND BREAKING



JACMEL: SCHOOL CONSTRUCTION



JACEML: SCHOOL CONSTRUCTION



JACMEL: SCHOOL CONSTRUCTION



JACMEL: SCHOOL CONSTRUCTION



JACMEL: SCHOOL CONSTRUCTION



JACMEL: SCHOOL CONSTRUCTION



JACMEL: COMPLETED CLASSROOM



JACMEL: ELEMENTARY SCHOOL



JACMEL: ROAD CONSTRUCTION



JACMEL: COMPLETED ROAD CONSTRUCTION



OEBB Mission Structure

West / Ouest

Southeast / Sud

Delmas

Cabaret

Cazale

Font Blanc

Conoyer

Rechimeau

Marbial

Lavoute

Lamandier

Church
School

**Church
School**

Church
School

Church
School

Church

Church
School

Church
School

Church

Church
School

Clinic

Clinic

Clinic



CABARET

CABARET GROUND BREAKING



Cabarete Church after Earthquake



Cabarete Church Repair



Cabarete Church Repair





Cabarete Church Repair

FUTURE WORK

Mission Short and Long Term

- **Gospel Ministry** – Evangelization, training for leaders and resource centre
- **Health care** – clinical care, medical supplies, dental care and medical teams
- **Education** – school supplies, and support for school feeding programs
- **Community Development**– Self-sustaining Coffee Program
- **Reconstruction**
 - Cabaret Repair Church
 - Cabaret School Reconstruction

PREACHING THE GOSPEL



HEALTH CARE & COMMUNITY SERVICES



BOYS HOME



GIRLS HOME



We are excited about the future.



We are blessed with the opportunity to preach the Gospel, train ministry leaders and create self-sustaining community development projects.

THANK YOU

On behalf of the Bethesda Mission – Thank you for the opportunity to share the work of the mission. We appreciate your prayers and future consideration to partner with;

Church - the preaching of the gospel

Christian Education and Training

Healthcare and Sustainable development in Haiti

We are excited about God's plan for Haiti and your support is of great encouragement.

Please continue to pray for the work in Haiti.